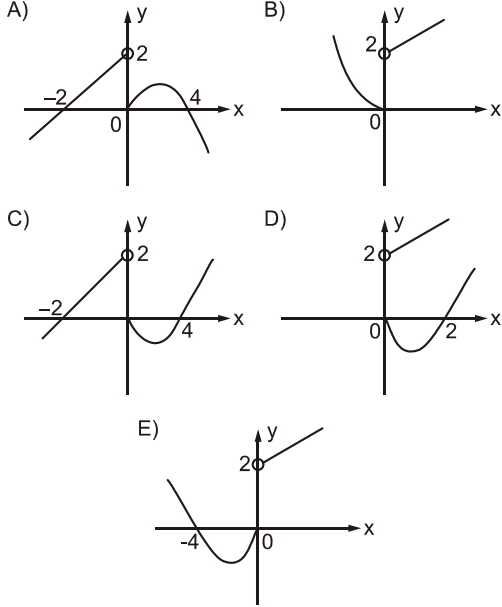
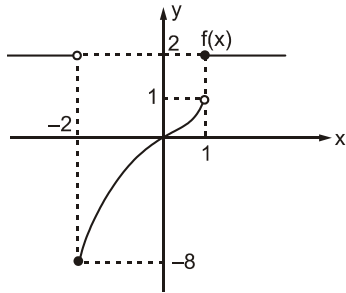


$$1. f(x) = \begin{cases} x+2, & x < 0 \text{ ise} \\ x^2 - 4x, & x \geq 0 \text{ ise} \end{cases}$$

fonksiyonunun grafiği aşağıdakilerden hangisidir?



2.



Şekilde grafiği verilen  $f(x)$  fonksiyonunu aşağıdakilerden hangisidir?

A)  $f(x) = \begin{cases} x^2, & x < -2 \text{ ise} \\ x^3, & -2 \leq x < 1 \text{ ise} \\ 2, & x \geq 1 \text{ ise} \end{cases}$

B)  $f(x) = \begin{cases} -x, & x < -2 \text{ ise} \\ 2, & -2 \leq x < 1 \text{ ise} \\ x^3, & x \geq 1 \text{ ise} \end{cases}$

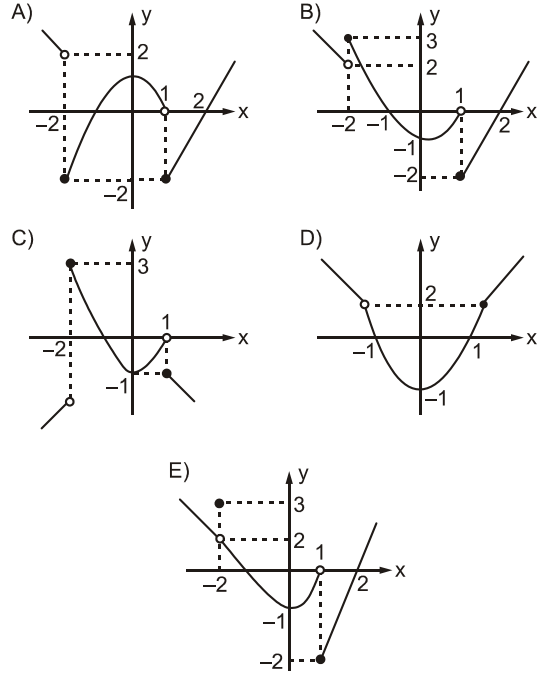
C)  $f(x) = \begin{cases} x^3, & x \leq -2 \text{ ise} \\ 2, & -2 < x \leq 1 \text{ ise} \\ -x^3, & x > 1 \text{ ise} \end{cases}$

D)  $f(x) = \begin{cases} 2, & x < -2 \text{ ise} \\ x^2, & -2 \leq x < 1 \text{ ise} \\ -2, & x \geq 1 \text{ ise} \end{cases}$

E)  $f(x) = \begin{cases} 2, & x < -2 \text{ ise} \\ x^3, & -2 \leq x < 1 \text{ ise} \\ 2, & x \geq 1 \text{ ise} \end{cases}$

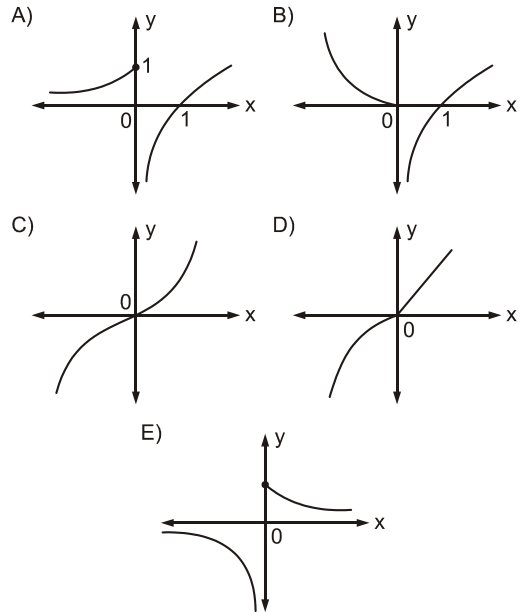
$$3. f(x) = \begin{cases} -x, & x < -2 \text{ ise} \\ x^2 - 1, & -2 \leq x < 1 \text{ ise} \\ 2x - 4, & x \geq 1 \text{ ise} \end{cases}$$

fonksiyonunun grafiği aşağıdakilerden hangisidir?



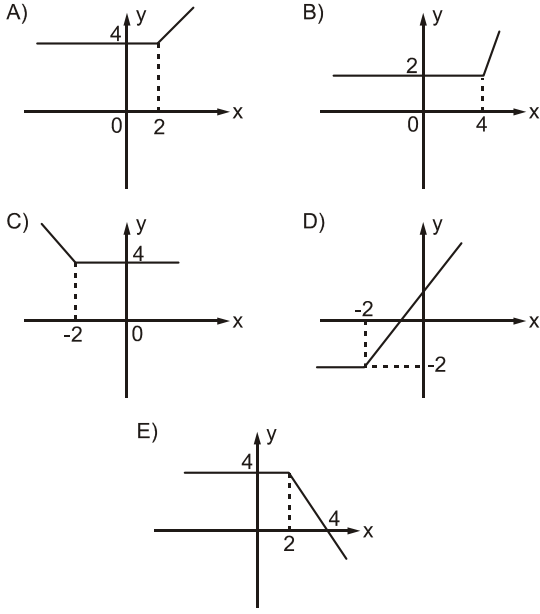
$$4. f(x) = \begin{cases} 2^x & x \leq 0 \\ \ln x & x > 0 \end{cases}$$

fonksiyonunun grafiği aşağıdakilerden hangisidir?



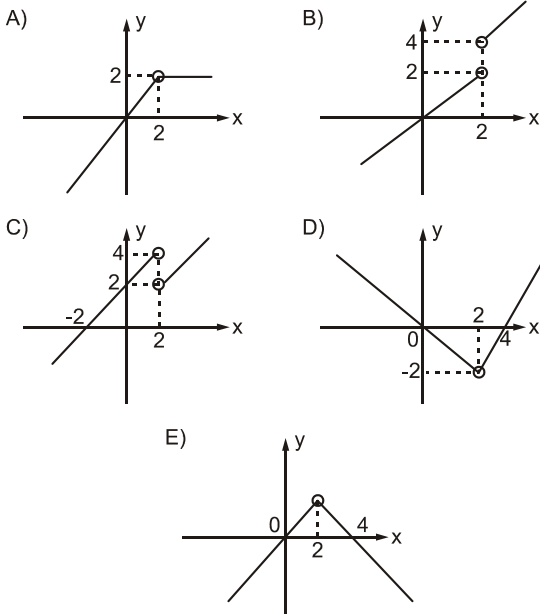
5.  $f(x) = |x - 2| + x + 2$

fonksiyonunun grafiği aşağıdakilerden hangisidir?



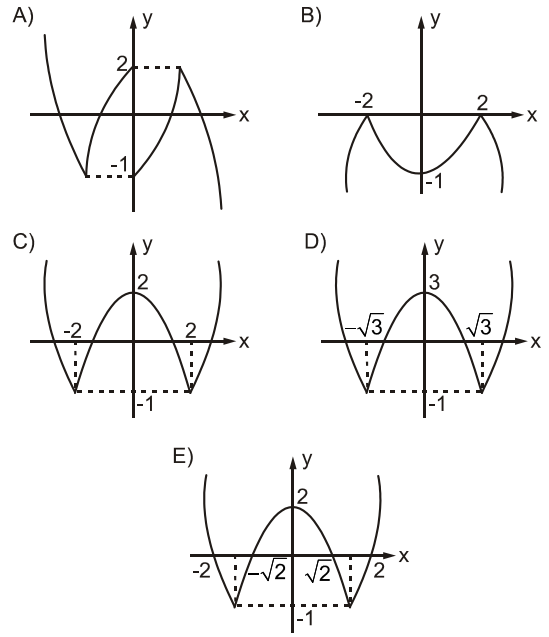
6.  $f(x) = \frac{|x-2|}{x-2} + x + 1$

fonksiyonunun grafiği aşağıdakilerden hangisidir?

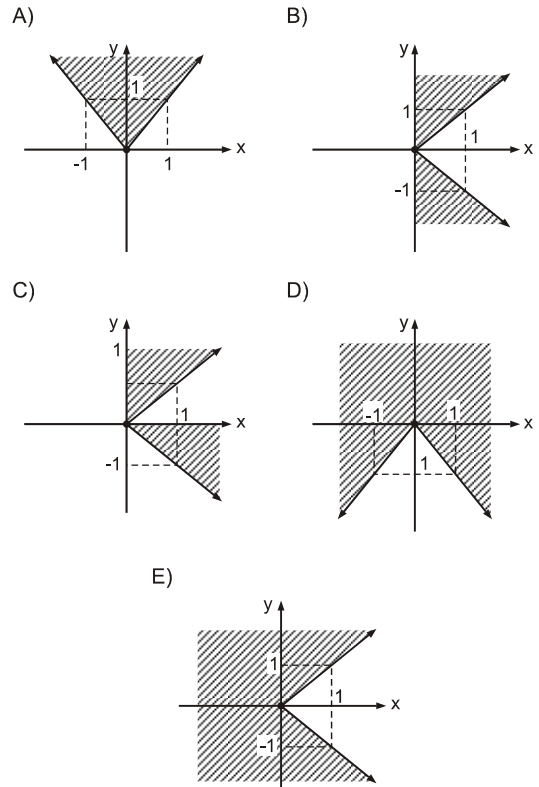


7.  $f(x) = |x^2 - 3| - 1$

fonksiyonunun grafiği aşağıdakilerden hangisidir?



8.  $|y| \geq x$  bağıntısının grafiği aşağıdakilerden hangisidir?



GEBÖS YAYINLARI

GEBÖS YAYINLARI

1.C

2.E

3.B

4.A

5.A

6.B

7.E

8.E